

REDLINE / WEBER CARBURETORS

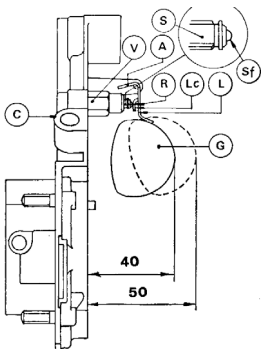
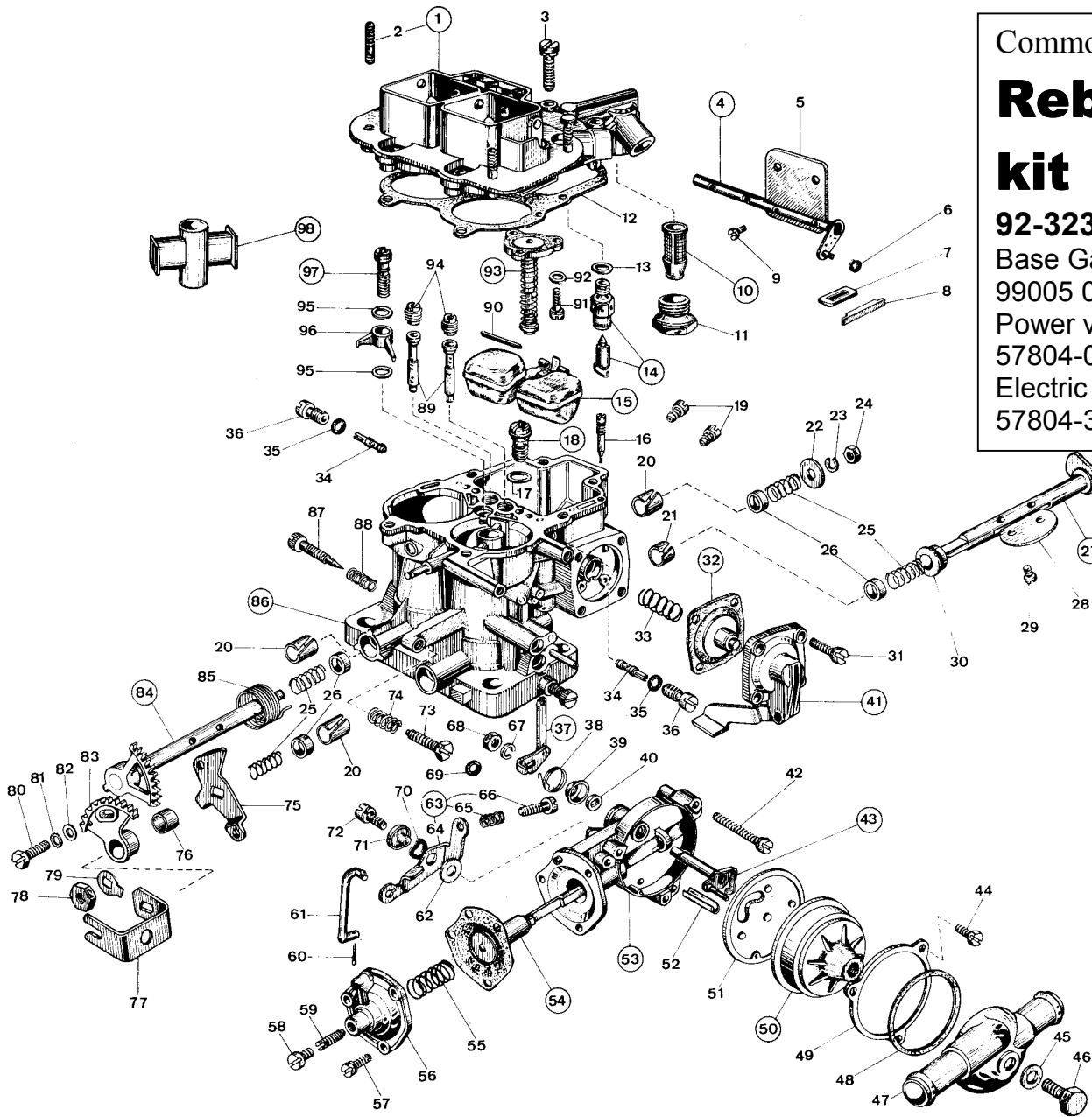
38 DGAS

OUTLAW SERIES
18930-020 38DGES
18930-032 38DGAS

Common Parts

Rebuild kit

92-3235-05
Base Gasket
99005 068
Power valve
57804-097
Electric choke
57804-333



Float setting notes

1. Fuel pressure is critical to flc Redline recommends 2.5 to 3 lbs. max.
2. For aggressive off-road float should be limited to 44.5mm max. drop

KEY CALIBRATED PARTS

- 14) 79516-XXX Needle and Seat (Steel needle)
79519-xxx (Viton performance needle)
- 15) 41030-019 Brass Float
- 19) 73801-xxx Main Jet
- 94) 77201-xxx Air corrector Jet
- 34) 74409-xxx Idle Jet (choke side)
74403-xxx Idle Jet (Inlet Side)
some early models have 74403-xxx on both sides
- 96) 76212-xxx Accelerator pump Jet